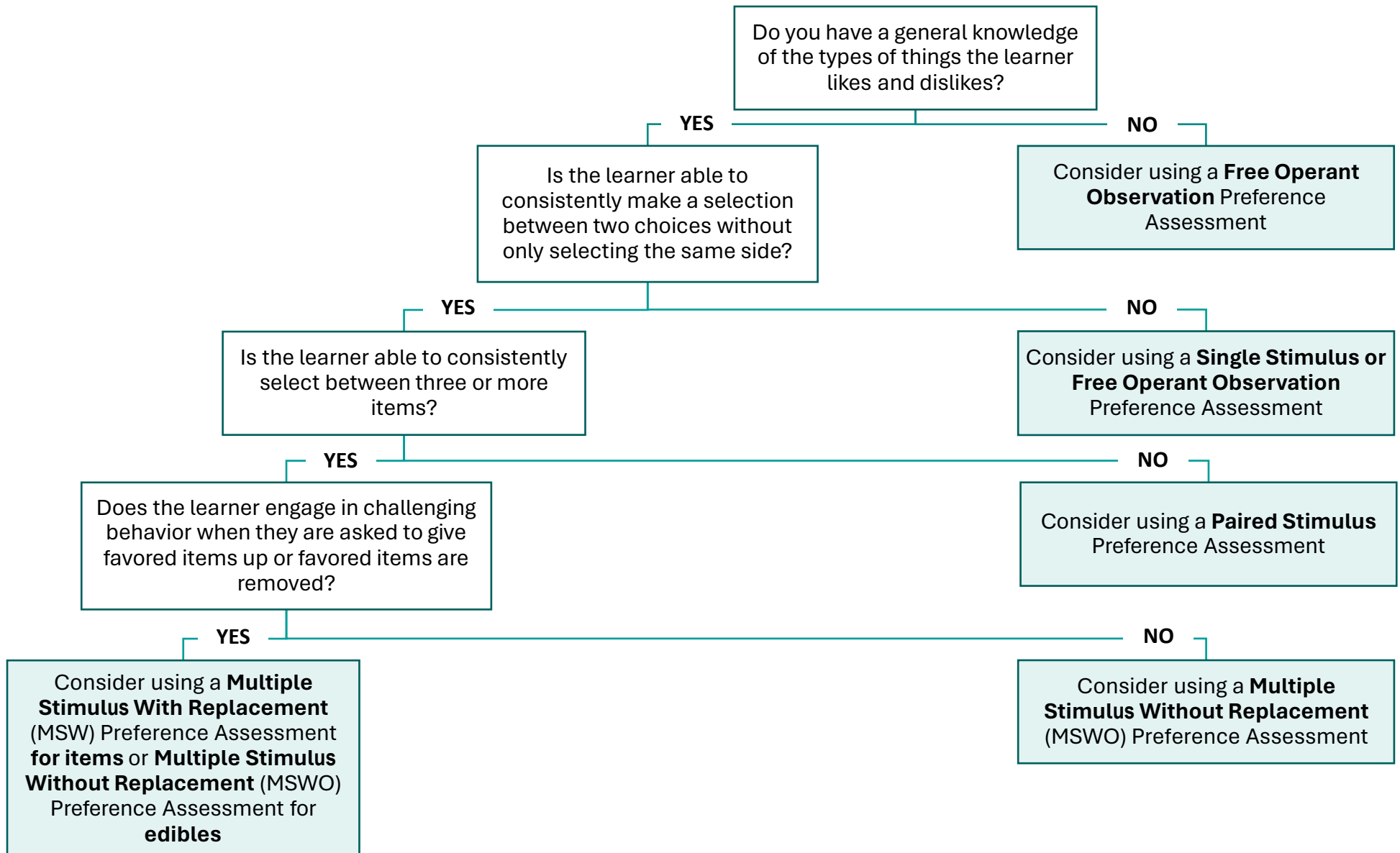


Preference Assessment Decision Tree

Use the decision tree below to help determine which type of preference assessment may be best for your learner. A text-based version of the decision tree is available on page 2 of this document.



Text-Based Decision Tree

1. Do you have a general knowledge of the types of things the learner likes and dislikes?
 - a. If YES, go to number 2
 - b. If NO, consider using a Free Operant Observation Preference Assessment
2. Is the learner able to consistently make a selection between two choices without only selecting the same side?
 - a. If YES, go to number 3
 - b. If NO, consider using a Single Stimulus or Free Operant Observation Preference Assessment
3. Is the learner able to consistently select between three or more items?
 - a. If YES, go to number 4
 - b. If NO, consider using a Paired Stimulus Preference Assessment
4. Does the learner engage in challenging behavior when they are asked to give favored items up or favored items are removed?
 - a. If YES, consider using a Multiple Stimulus With Replacement (MSW) Preference Assessment for items or Multiple Stimulus Without Replacement (MSWO) Preference Assessment for edibles
 - b. If NO, go to number 5
5. Consider using a Multiple Stimulus Without Replacement Preference Assessment